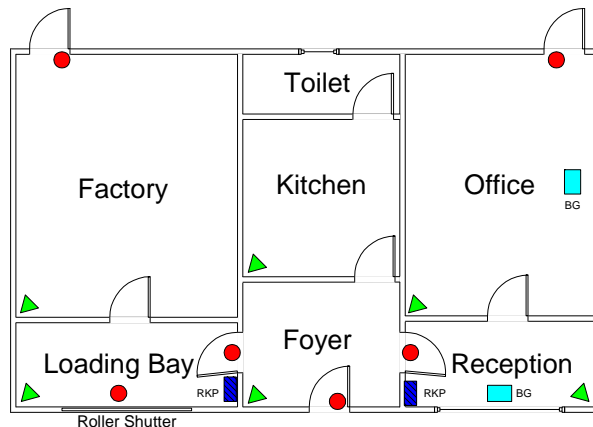


Scantronic Installer Quick Start Guide – Commercial with Common Area

Commercial setting of a building including two or more separate areas linked together with a common foyer can be configured using a common area function in the Scantronic 9853. This allows the control panel to automatically set the common area when the last occupant is leaving the building.



Zone List:

1. Front Door
2. Foyer PIR
3. Loading Bay Entrance
4. Shutter
5. Loading Bay PIR
6. Factory PIR
7. Factory Fire Door
8. Kitchen PIR
9. Office Fire Door
10. Office BGD
11. Office PIR
12. Reception PIR
13. Reception BGD
14. Reception Entrance

The above diagram shows a typical example of a commercial building that could use the "Common Area".

The end user requires each side of the building to be set separately as the Office and Factory staff will be working different hours. The common area including the Foyer, Kitchen and Toilet will only be armed when there is no one in the building. This will allow either the Factory or the Office staff use of the facilities. For best operation, there should be two keypads. One fitted in the Loading Bay and the other fitted in Reception.

As this is commercial, we assume the use of Grade 3 Anti Masking detectors. We are also assuming the use of triple-resistor wiring for these detectors. See 9954EN expander or Panel Installers Guide for details.

To Program the system

Program Zones

Zone	Location	Zone Types	Attributes & Partitions	Description
01	Panel zone 1	Final Exit (05)	A, B 1	Front Door
02	Panel zone 2	Entry Route (06)	A, B 1	Foyer PIR
03	Panel zone 3	Final Exit (05)	A 1	Loading ED
04	Panel zone 4	Normal Alarm (03)	A 1	Shutter
05	Panel zone 5	Entry Route (06)	A 1	LBay PIR
06	Panel zone 6	Normal Alarm (03)	A 1	Factory PIR
07	Panel zone 7	24 Hour (04)	A 1	Factory FD
08	Panel zone 8	Normal Alarm (03)	A, B 1	Kitchen PIR
09	Panel zone 9	24 Hour (04)	B 1	Office FD
10	Panel zone 10	Normal Alarm (03)	B 1	Office BGD
11	Panel zone 11	Normal Alarm (03)	B 1	Office PIR
12	Panel zone 12	Entry Route (06)	B 1	Recpt PIR
13	Panel zone 13	Normal Alarm (03)	B 1	Recpt BGD
14	Panel zone 14	Final Exit (05)	B 1	Rcept DR

Programming Commands

Set Up the following commands

Command	Function	Option
21	Wiring Configuration	2 (FSL 2K2/4K7 – 16 zones)
28	Status Display	1 (PD 6662)
29	Entry Alarm Delay Time	1 (PD 6662)
32	Keypads & Partitions	KP1 = A, KP2 = B
33	System Reset	1 (Assuming DD243 System)
39	Partition A Exit Mode	2 (Final Door Set)
41	Bell Delay	0 (Assuming DD243 System)
42	Bell Duration	5 (15 minutes)
44	Partition A Exit Time	Any
201	Entry Time (route 1)	<45 Seconds
47	Partition A Alarm Response	2 (Full Alarm)
48	Lockout Keypads in Entry	1 (Assuming DD243 System)
49	Duress Code	0 (Not Allowed – ACPO 2005)
56	Access Code Digits	1 (6 digit, PD6662 Grade 3)
62	Partition B Exit Mode	3 (Final Door Set)
63	Partition B Alarm Response	2 (Full Alarm)
65	Partition B Exit Time	Any
81	Panel Output 1	00 Bell (system)
82	Panel Output 2	11 Strobe + Set (system)
88	Anti-mask Mode	Any (Set to match fault operation of Detectors used)
89	Alarm Confirmation	1 (Assuming DD243 System)
134 -140	Various PD6662 Options	Decide which are appropriate
160-164	Various DD243 Options	Decide which are appropriate

User Programming

User	Code	Assignment
01	123456	A, B (whole system)
02	222222	A (Factory)
03	333333	B (Office)

User Operation

To set:

Partition A set	=	Partition A User Code or Prox + ✓
Partition B set	=	Partition B User Code or Prox + ✓
User 1 in	=	Code or Prox + A or B + ✓
First person in	=	Code or Prox + ✓

If a Partition only user unsets the system first then the common area and their partition will unset. If User1 unsets the system they can unset a particular partition or the whole system.