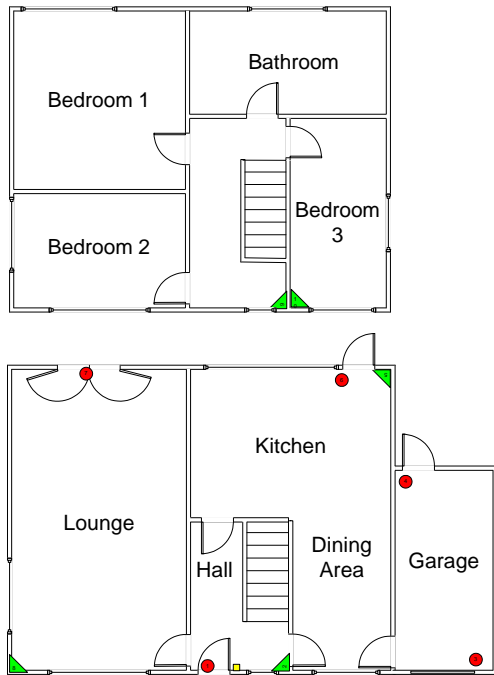


## Scantronic Installer Quick Start Guide – Domestic Full/Part Set System

Domestic setting on the Scantronic Hybrid Control Panels is achieved with the “Level setting options” commands. This is the heart of simple domestic Level setting and un-setting.

Only program the functions listed below and the system will work. If you need to add other details such as communications (PD6662 grade 2 Installation), Engineer reset or the external communications outputs then do so. A separate sheet is available on how to set up typical communications for PD 6662 Grade 2 installations.

### ***A basic house***



#### **Zone List:**

1. Front Door
2. Hall PIR
3. Lounge PIR
4. Lounge Door
5. Kitchen PIR
6. Kitchen Door
7. Garage FD
8. Garage RD
9. Landing PIR
10. Bedroom 3 PIR

This makes a good example of a typical house that requires a little extra protection due to the flat roof above the garage giving easy access to Bedroom 3.

The user requirements will be for a full set, a part set and a second part set allowing a guest in Bedroom 3.

### To program the system

#### ***Program Zones***

Zone	Location	Zone Type	ATTRIBUTES	Description
01	Panel zone 1	Final Exit (05)	B, C 1	Front Door
02	Panel zone 2	Entry Route (06)	B, C 1	Hall PIR
03	Panel zone 3	Normal Alarm (03)	B, C 1	Lounge PIR
04	Panel zone 4	Normal Alarm (03)	B, C 1	Lounge Door
05	Panel zone 5	Normal Alarm (03)	B, C 1	Kitchen
06	Panel zone 6	Normal Alarm (03)	B, C 1	Back Door
07	Panel zone 7	Normal Alarm (03)	B, C 1	Garage Door
08	Panel zone 8	Normal Alarm (03)	B, C 1	Garage FDoor
09	Panel or expander zone 9	Normal Alarm (03)	1	Landing
10	Panel or expander zone 10	Normal Alarm (03)	B 1	Bedroom 3

## ***Programming Commands***

### **Set Up the following commands**

<b>Command</b>	<b>Function</b>	<b>Option</b>
21	Wiring Configuration	Any
28	Status Display	1
29	Entry Alarm Delay Time	1
33	System Reset	1 (Assuming DD243 System)
39	Exit Mode	2 (Final Door Set)
41	Bell Delay	0 (Assuming DD243 System)
42	Bell Duration	5 (15 minutes)
44	Exit Time	Any
201	Entry Time (route 1)	<45 Seconds
48	Lockout Keypads in Entry	1 (Assuming DD243 System)
49	Duress Code	0 (ACPO 2005)
56	Access Code Digits	0 (4 digit)
60	Level B Final Exit =	0 (Final Exit)
61	Level B Entry Route =	1 (Final Exit)
62	Level B Exit Mode	2 (Silent Set)
63	Level B Alarm Response	2 (Local Alarm)
65	Level B Exit Time	3 (30 seconds)
70	Level C Final Exit =	0 (Final Exit)
71	Level C Entry Route =	1 (Final Exit)
72	Level C Exit Mode	2 (Silent Set)
73	Level C Alarm Response	2 (Local Alarm)
75	Level C Exit Time	3 (30 seconds)
81	Panel Output 1	00 (Bell)
82	Panel Output 2	11 (Strobe + Set)
89	Alarm Confirmation	1 (Assuming DD243 System)

## ***User Operation***

### **To set:**

Full set = Code or Prox + ✓

Part set = Code or Prox + B

Part set with guest = Code or Prox + C

The display will show the text description of each set mode; a double beep will be emitted when the system is set.

### **To un-set:**

Open door or come down stairs to start entry timer. Enter Code or Present Prox token (If a DD243 system), a double beep will be emitted when the system is unset.